



## Some of the things we have done so far?

- Getting to know you games
- Cooking practice – gas and open fire
  - Team building activities
    - 1<sup>st</sup> aid
  - Camping preparation
- Designed badges to sell for fundraising
  - Bag packing for group funds
  - Pioneering and lashing skills
- Entertainment practice for Jamboree
  - And there is more to come.



## Bag Packing

We have raised £3,200. We will be using this for;

- Extra cooking equipment
- Sides for the mess tent
- Hoodies or t-shirts for the unit
- Banners and flags for our site
- Entertainment costumes and props
- Food/drink for Culture Day
- First Aid kits
- And other items we will need.



## World Scout Jamboree, Sweden, 2011

- Every 4<sup>th</sup> year since 1920
- 32,000 participants
- Over 150 countries
- 4,444 scouts from the UK
- Theme – Simply Scouting

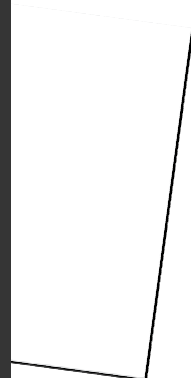
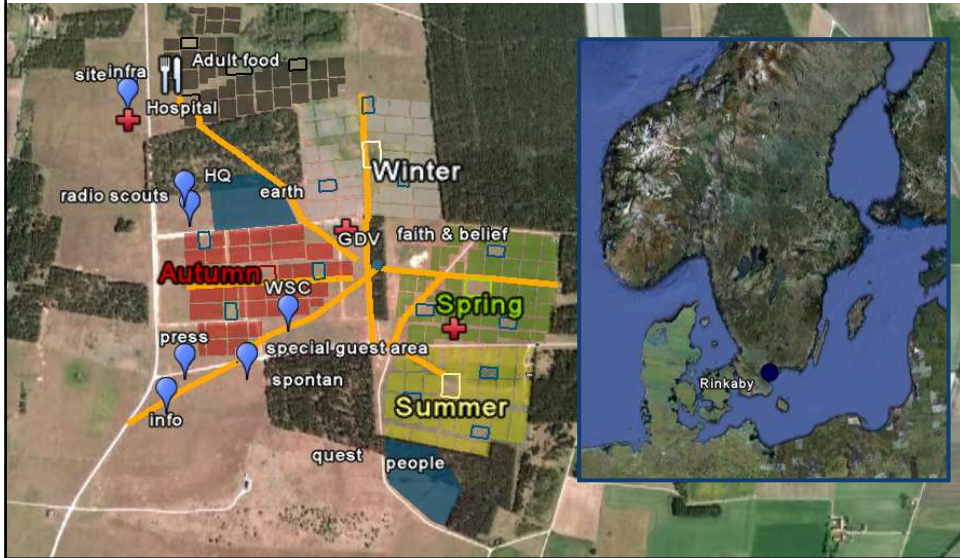


## Getting there...

On the 25<sup>th</sup> July we will meet at a central point (currently unknown) and travel by coach to Birmingham Airport. We fly at 7.10pm arriving in Copenhagen at 10.00pm. This is where we will spend two days with the rest of the UK Contingent, sight seeing and having a UK Jamboree party. We will be staying in a hostel whilst in Copenhagen.



# Jamboree Area





## The Programme

The Jamboree spontaneous programme together with the Module Activities will let you make personal progress when you explore new cultures and learn how to create a better world.





## Meetings

The Jamboree will encourage meetings between Scouts from different cultures, religions, countries and contingents.



## Nature

The Jamboree Programme will use the natural environment as a learning tool, demonstrating both its vulnerability and what individuals can do to better protect the world we live in.





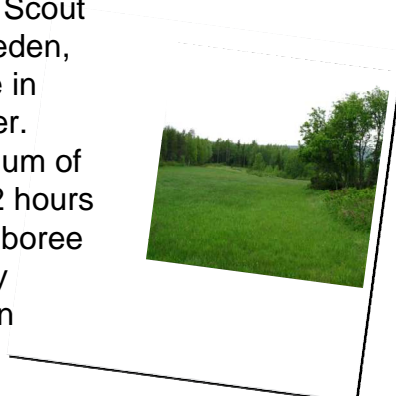
## Solidarity

The Jamboree will gather people from all across the world, united through common values and goals.



## Camp in camp

We will leave the Jamboree site for 24 hours and experience a Swedish Scout Camp hosted by scouts from Sweden, Denmark and Norway. We will be in patrols – nine scouts to one leader. Each campsite will have a maximum of 250 campers with no more than 2 hours travelling time from the main Jamboree site. Every patrol will get a slightly different experience depending on where they go.





## Home Hospitality - HoHo

We will stay for a few days with a foreign Scout family or group. Try their food and get close to their Scouting and way of life.

We are going to the Netherlands!



## HoHo – The Netherlands

We will leave the Jamboree site on the 7<sup>th</sup> August, returning to Copenhagen. From Copenhagen we will fly to Amsterdam at 6.10pm arriving in Amsterdam at 7.35pm. From there we will travel to the town where we are staying for HoHo.



## HoHo

Whilst at HoHo we will stay with local scout families in pairs. We will meet up during the day and some evenings to do things as a Unit and with the Dutch scouts, but there will also be some time when the scouts will spend time with their host family and experience family life in the Netherlands. You may wish to give some thought as to a small thank you present you could give to your host family, perhaps something to represent Britain or Nottinghamshire.



## Returning Home

We will leave Amsterdam on the 12<sup>th</sup> August at 4.30pm and arrive at Birmingham airport at 4.45pm. We will then travel by coach to a central location to be met by parents.



## European Health Insurance Card

- This is to get medical treatment in the EEA and Switzerland. (E111's are now invalid.)
  - Over 16's need their own card.
- Under 16's will need parent/s to register and then add the child under the dependents section.
  - You can get a card online at [www.dh.gov.uk/travellers](http://www.dh.gov.uk/travellers), or phone 0845 6062030, or from the Post Office.
  - There is no charge and they last for five years. They can be renewed six months before the expiry date.
- We will be asking for photocopies of the EHIC cards in May, so please apply for one before then. If you already have one please check it is in date for the Jamboree.



## Health Issues

- No jabs are needed for any of the countries we will visit but we suggest scouts are up to date with tetanus.
- There may be mosquitoes so we suggest repellent is taken.
- If you do take medication please make sure you have enough for the whole trip with some spare, just in case!



## Scout Insurance

- Personal Injury – up to £5,000
- Medical and Emergency repatriation expenses - up to £10,000,000.
- Personal Belongings - up to £1,000 (limit £250 for valuables/£250 any one article, pair or set).
- Money - up to £1,000 for Scout Party leaders, £200 for other Insured Persons aged 16 or over and £150 if aged 15 or under.
- More information about this at a later date.



## Badges and swops

- We designed unit badges to sell for fundraising. These are £2.00 each. Please return money as you sell them.
- Start collecting swops – badges, pencils, t-shirts, key rings etc. Particularly items that suggest the UK or Nottinghamshire.
- Collect photos of your family and where you live and postcards of Nottinghamshire.



## Next meeting – Sunday 13<sup>th</sup> February

Meeting at Bulwell TA Centre,  
Hucknall Lane, Bulwell, NG6 8AQ.

Directions to follow...



## Questions asked by parents...

### **1. How much spending money will the Scouts need? Where will it be kept at the Jamboree?**

This is your choice, see presentation for the likely amount covered by insurance. Please remember that food and drink is all included, but Scouts may need extra money to spend while on HoHo and purchase gifts, snacks etc... We are not yet sure about the arrangements for where monies will be kept during the Jamboree.

### **2. What currency will be needed?**

We are not sure of this yet, but we will share this information when we know. We do know that we will be in the following countries: Sweden, Holland and Denmark.



### 3. How many swaps will the Scouts need?

- As many or a few as the Scout wants to. It is however an idea to have some small gifts for HoHo families. Good, light and cheap swaps are Scout Badges (old and new), unit badges, woggles, Scout 50p coins, lace, Nottingham pens/pencils etc...
- **4. Who will look after money, medication and passports?**  
The Unit leadership team will be looking after passports and spare medication. A decision is yet to be made about monies.
- **5. What is the weight limit for the flight?**
- We are not sure of this yet, but we will share this information when we know. We are not flying budget air, so we are expecting around 20kg.



### 6. How will contact with the Scouts work during the Jamboree?

- Scouts are permitted to bring mobile phones at theirs/your discretion. The Jamboree will be a busy place so don't expect a phone call every night. Sensibly a phone call or text when arrived, one at a mid point and one towards the end of HoHo.

### 7. What do I do if personal details (address/medical condition) change?

- Tell the unit leader as soon as possible, you may then need complete an additional form. A health form will need to be sent off to the National Organising Team ahead of departure to the Jamboree.